



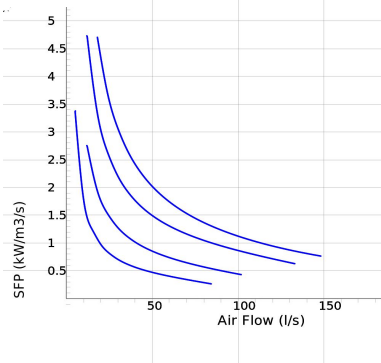
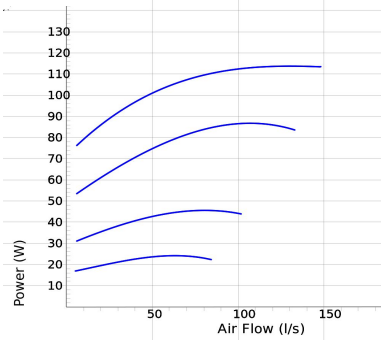
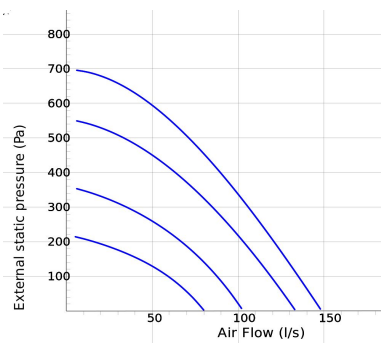
LPKB 125 C1 EC

LPKB EC

- Low profile duct fan with circular connections.
- A small and useful duct fan which are perfect for spaces with minimum height clearance.
- With one connection on the inlet side.
- High capacity and efficiency with low sound levels.
- Impeller with backward curved blades.
- The external rotor motor has maintenance-free sealed ball-bearings and is very energy efficient.
- Speed controlling can be done with the built-in potentiometer, 0-10 V alt. external control.
- Integrated motor protection.
- Junction box has enclosure class IP 54.
- Fan housing is manufactured from galvanized sheet steel.
- Duct connections are equipped with rubber seals.
- The fan is intended to be installed in a duct system.
- A duct connected fan can be installed outside or in damp environments.
- The mounting brackets simplify installation in any position.

Accessories

- Controller IQ-Reg EC
- Speed controller MS EC
- Pressure regulator CALAIR-PR-230V
- Pressure regulator FKP-R
- MK 125
- BSV 125
- RSK 125
- YG 125
- VK 125
- FLK 125
- FLF 125
- LDC 125



Voltage steps

1	2	3	4
5.5V	7V	8.5V	10V

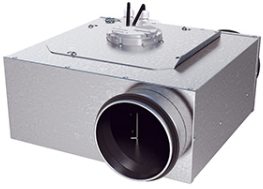
TECHNICAL DATA

7540234 LPKB 125 C1 EC	
Voltage	230 V
Phase	1 ~
Frequency	50/60 Hz
Power	115 W
Current	0.9 A
Speed	3780 r.p.m.
Max. temperature of transported air	50 °C
Sound pressure level at 3 m	58 dB(A)
Weight	5.5 kg
Enclosure class	44 IP
Insulation class, motor	F
Duct connection	125 mm
Max. flow	149 l/s
Max. pressure	701 Pa
Voltage range	200-240 V

SOUND DATA

	Flow (l/s)	L _{WA} tot dB (A)	63Hz	125Hz	250Hz	500Hz	1KHz	2KHz	4KHz	8KHz
4. Surrounding Lw dB(A) 10V	113	65	40	49	55	63	57	54	47	39
4. Outlet Lw dB(A) 10V	130	83	66	70	71	80	77	74	71	64
4. Inlet Lw dB(A) 10V	113	79	56	68	68	77	68	67	64	57
3. Inlet Lw dB(A) 8.5V	103	78	56	65	66	77	66	64	61	53
2. Inlet Lw dB(A) 7V	81	71	52	61	65	68	61	58	55	45
1. Inlet Lw dB(A) 5.5V	62	66	46	56	60	63	54	51	46	36

DIMENSIONS



LPKB 125 C1 EC

